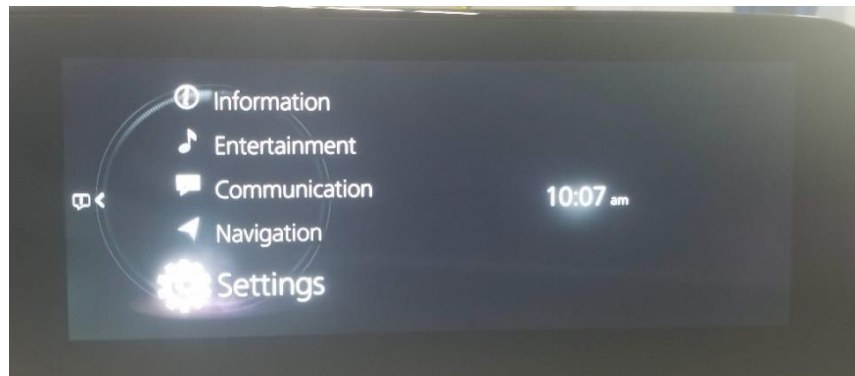


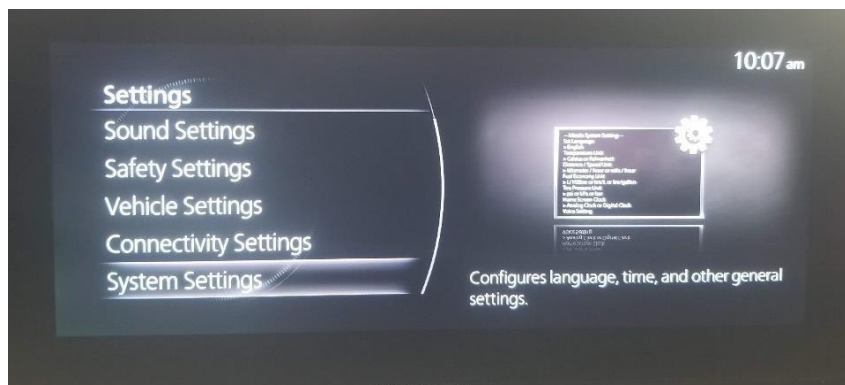
## 7 GEN MAZDA CONNECT UPDATE PROCEDURE

### CMU Software Version Verification Procedure

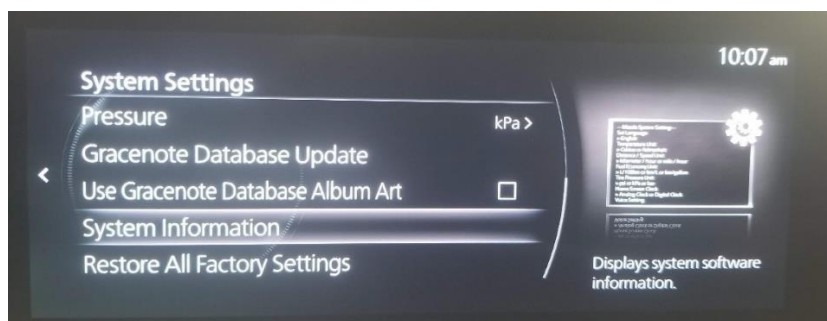
1. Turn the ignition to ACC or ON.
2. Select "Settings" on the Home screen.



3. Select "System Settings" on the screen below.



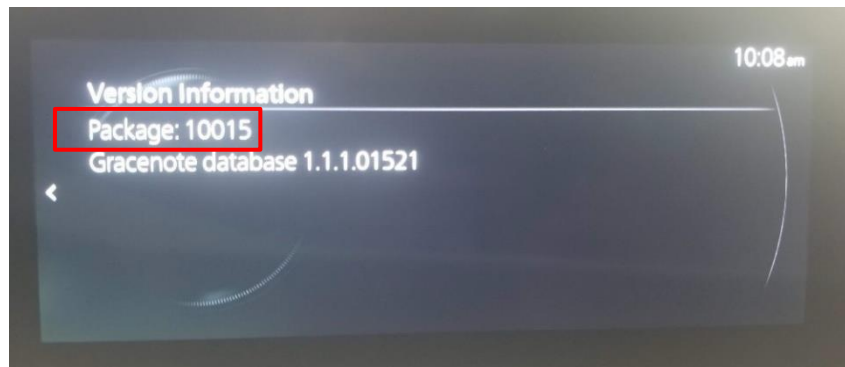
4. Select "System Information" on the screen below.



5. Select "Version Information" on the screen below.



6. Check the CMU software version in the package row.  
**NOTE:** CMU software version is 10015 in this example.

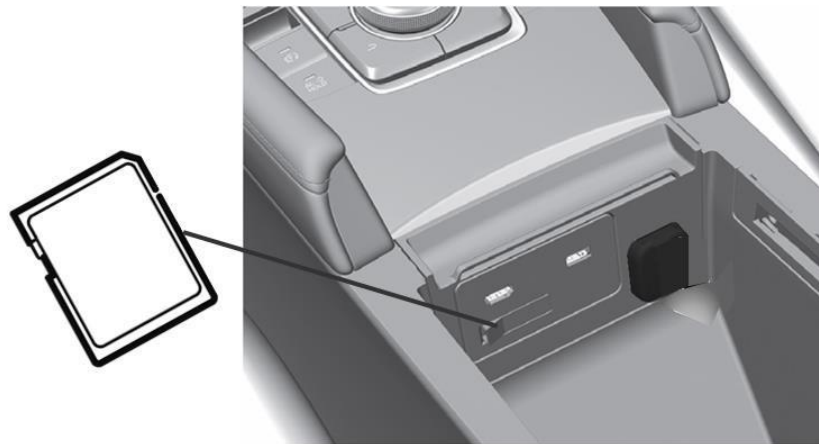


## CMU Software Update Procedure

1. Prepare a USB memory which contains the CMU software to be installed.

**NOTE:** The software version can only be updated. It is not possible to downgrade the software version.

2. Remove the Navigation SD card from SD card slot of center console.

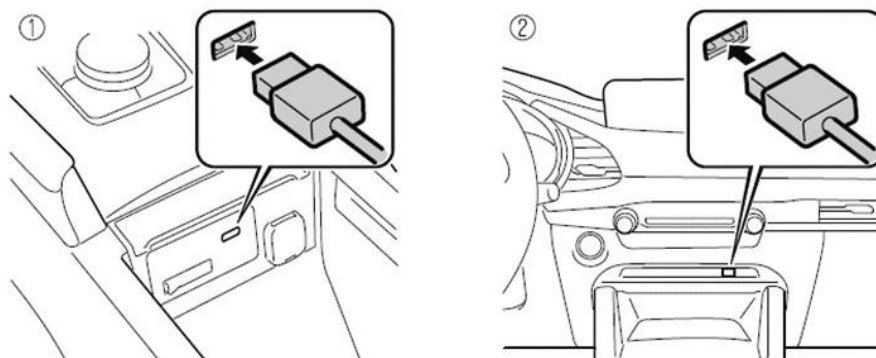


3. Turn the ignition to ACC or ON with the push button start.

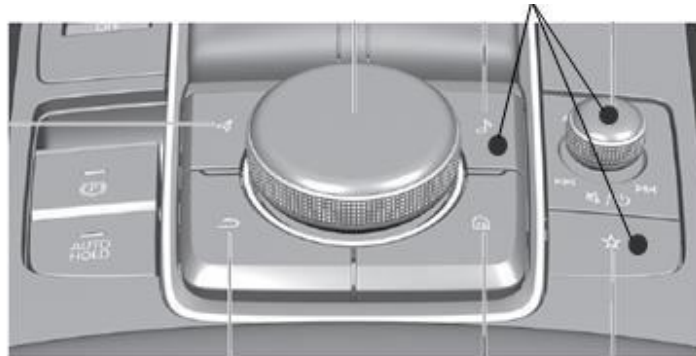
**NOTE:** The update should only take about 10 minutes so check the vehicle in 15 minutes after the update starts so that the battery does not discharge. The vehicle is not equipped with the ignition auto shutoff function like previous models.

4. Insert the USB memory stick prepared at step 1 into a USB port.

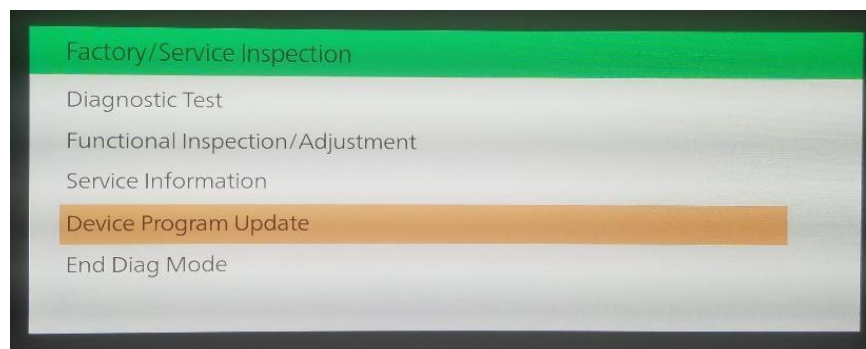
**NOTE:** The memory stick can be inserted into either USB port.



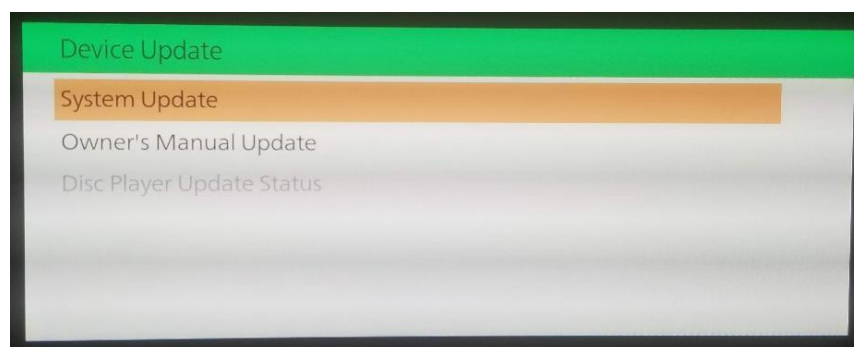
5. Press and hold the Volume/Mute button, then press and hold the Music and Favorite buttons at the same time for 3-5 seconds and the Diagnostic Test Screen will appear.



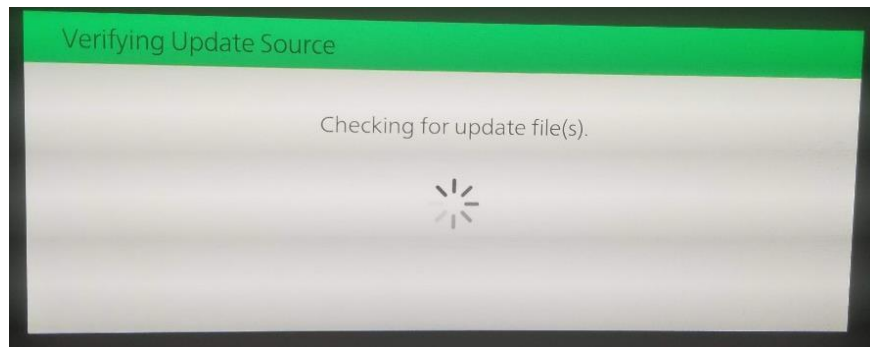
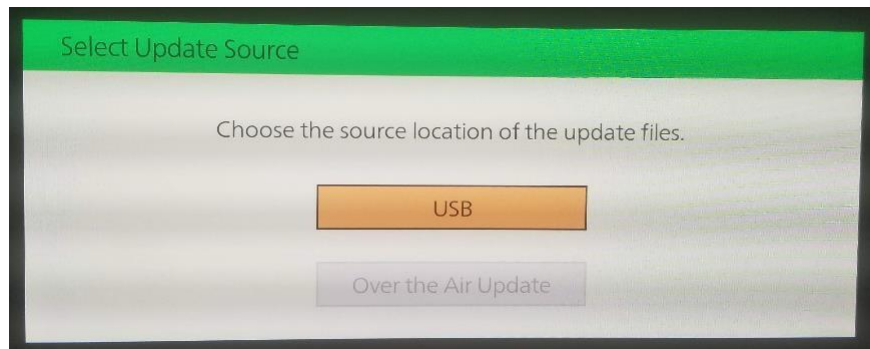
6. Select "Device Program Update" on the screen below.



7. Select "System Update" on the screen below.



8. Select "USB" and the system will start checking for the update file.

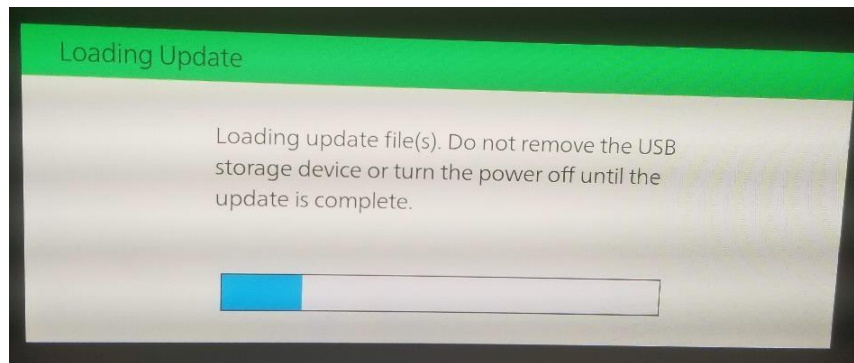
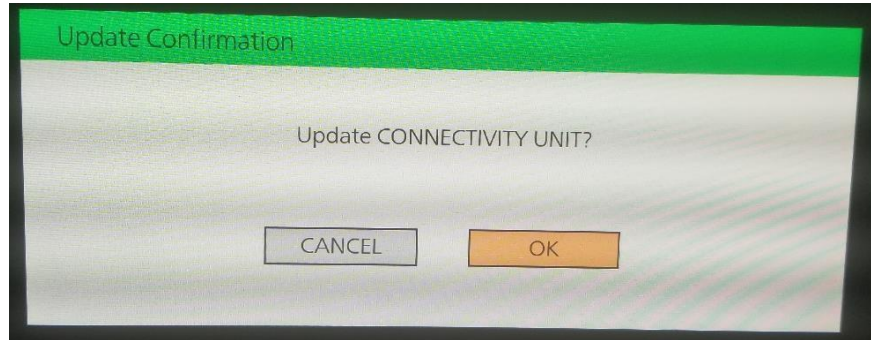


9. Select "CONNECTIVITY UNIT" on the screen below.

Update File(s) Selection		
Package Name	Current Version	Update Version
CONNECTIVITY UNIT	10012	10015

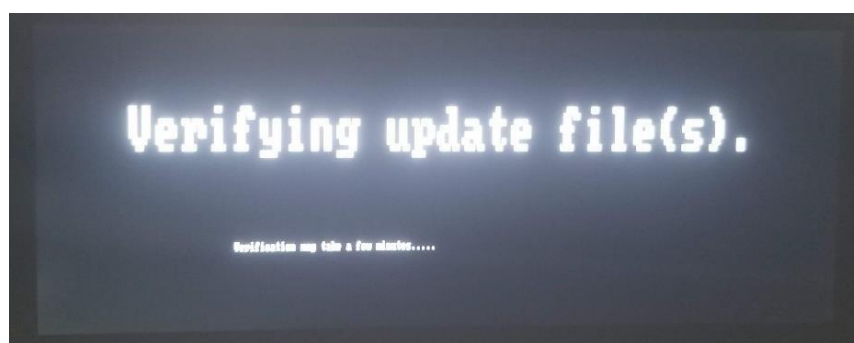
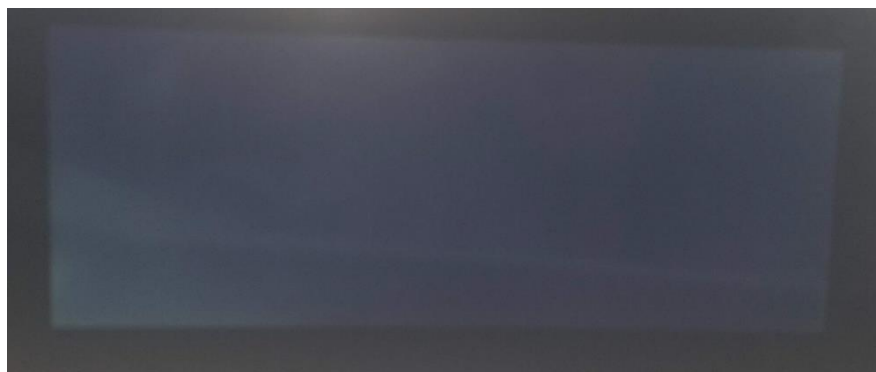
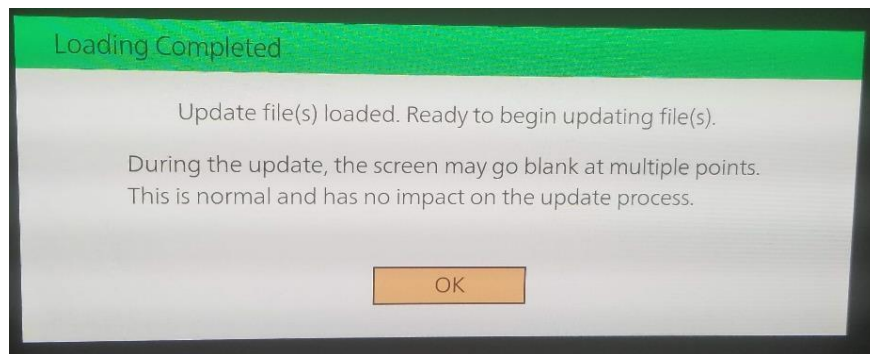
10. Select "OK" on the screen below and wait until the update (loading) is completed.

**NOTE:** DO NOT switch the ignition OFF until the update (loading) is completed.



11. Select "OK" on the screen below. The data update will start automatically after 10 seconds if "OK" is not selected.

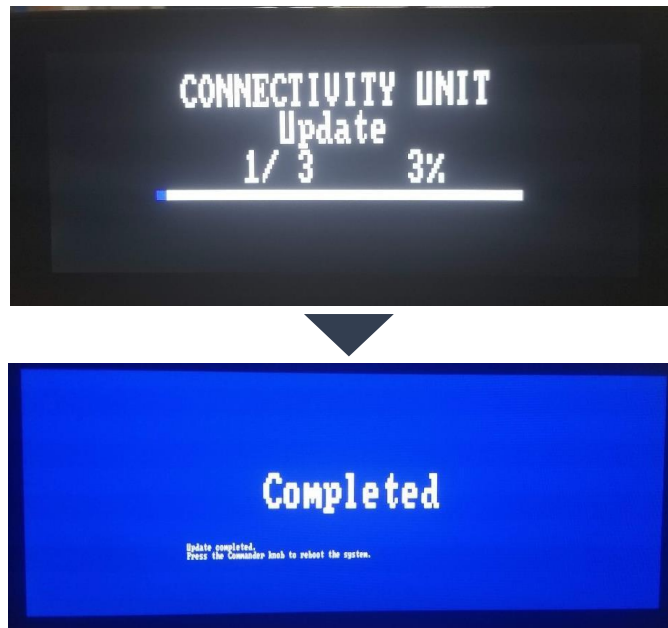
**NOTE:** After selecting "OK", the system will reboot and the display will turn black, followed by a "Verifying update file(s)" screen.





12. Wait until the update is completed.

**NOTE:** The system will reboot several times during the update process.



13. Remove the USB memory stick from the USB port.

14. Press the commander knob to reboot the system.

15. Check the CMU software version according to the instructions above “CMU Software Version Verification Procedure”.

16. Switch the ignition OFF and insert the Navigation SD card.

### MICROPHONE CHECK AFTER FIRMWARE UPDATE

The shape of the switches differs depending on the vehicle model.

No.	Item	Explanation
1		<b>Talk/Pick-up button:</b> When the button is pressed, the voice recognition top screen is displayed and the voice recognition is activated.  (While voice guidance is being announced) Press the button to skip the voice guidance.
2		<b>Hang-up button:</b> Press the button to end the voice recognition.

1. Press 'Talk/Pick-up Button

2. Confirm that the voice recognition starts command "say a command" is played back.

3. If the command is not played back, please remove the car battery (Data-Reset).

4. **Check steps 1 and 2 again.**